



# The Hospital Incident Command System

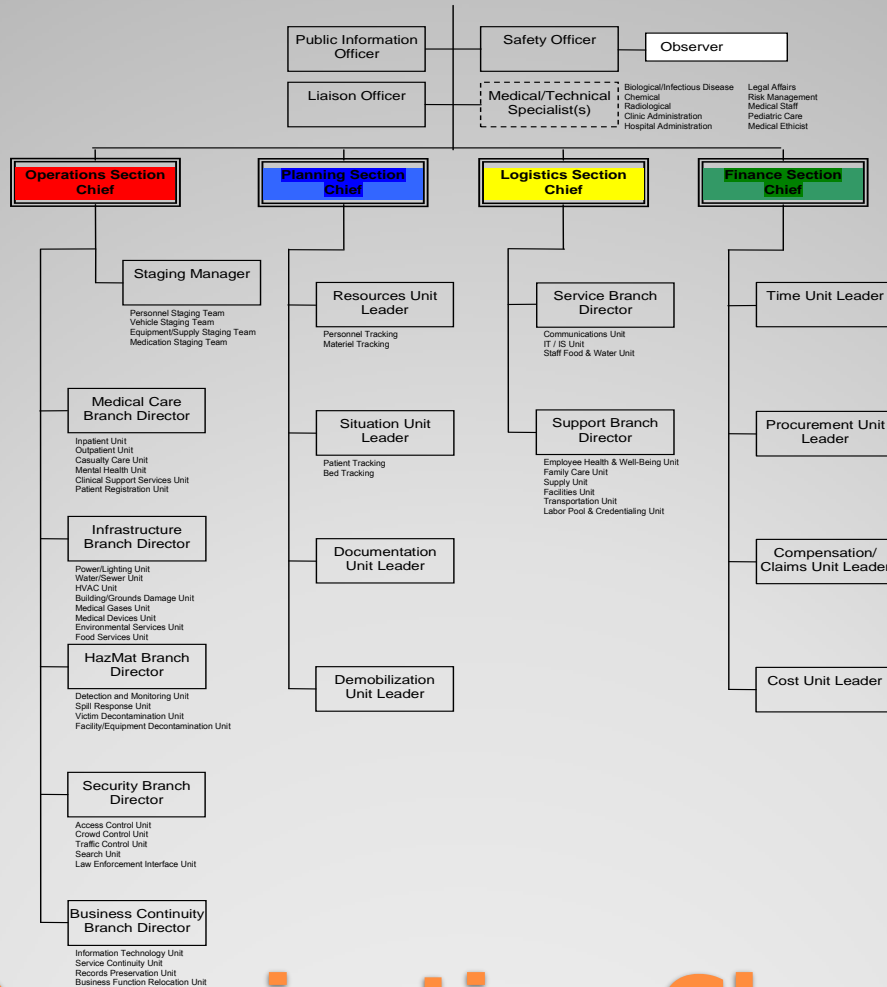
**“So we have organized chaos, rather than just chaos!”**

- It's an organizational structure where "a systematic tool is used for the command, control, and coordination of emergency response"
- Chain-of-Command structure

**Why HICS?**



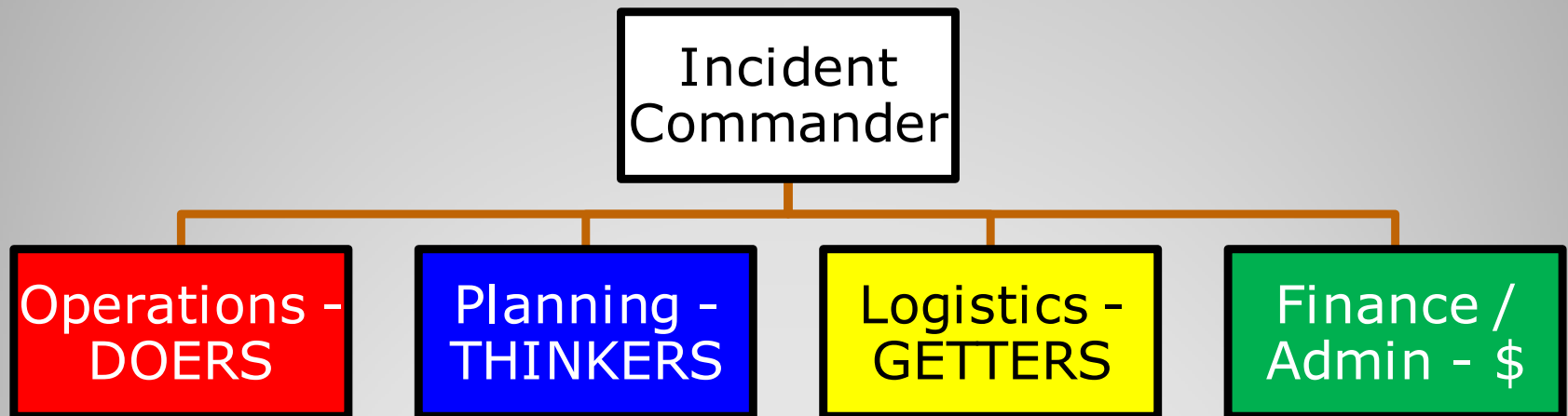
# Incident Commander



# HICS Organization Chart



- Each section has a Section Chief
- Each section has specific functions



## HICS Overview: Sections in HICS



Operations  
Chief

Medical Care  
Branch  
Director

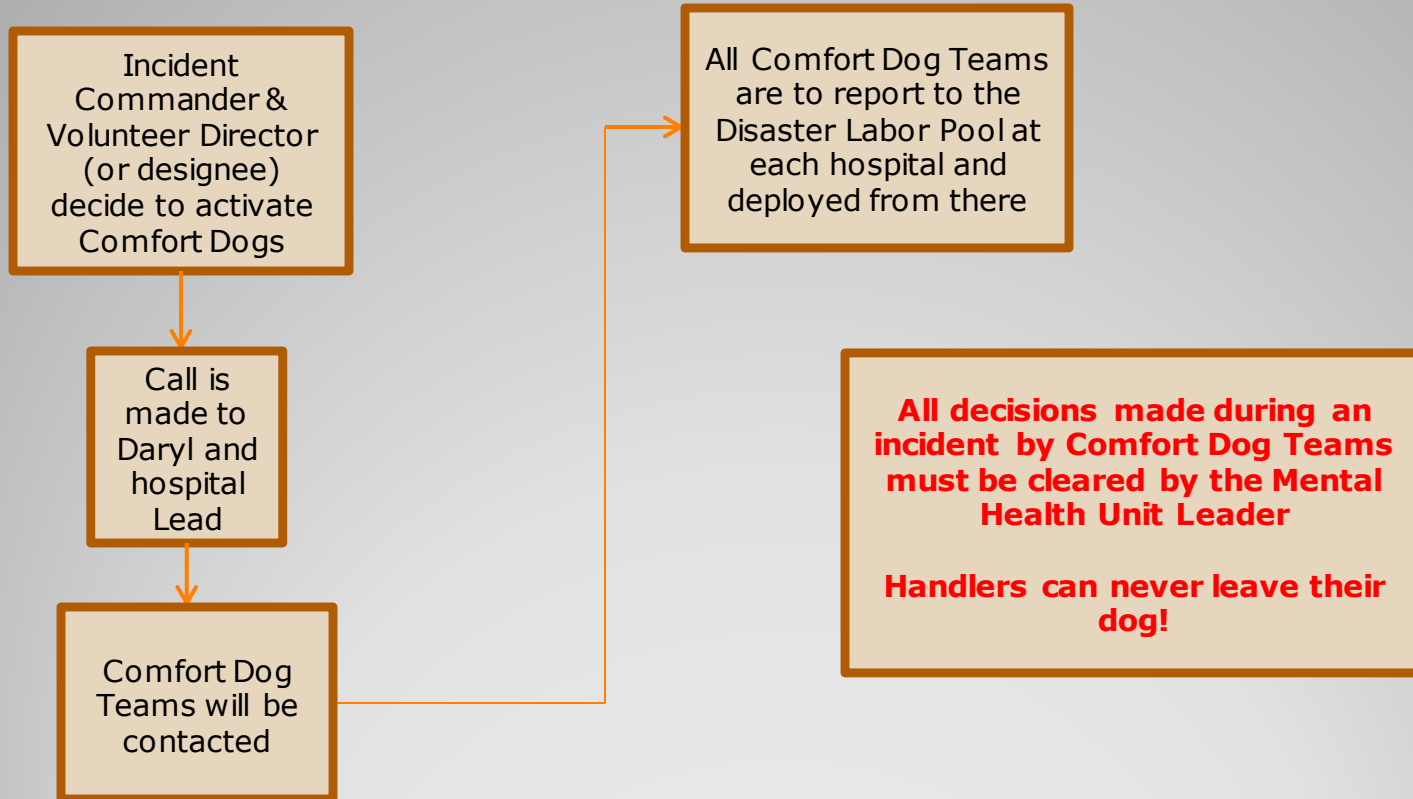
Mental Health  
Unit

Comfort Dogs

# Where do Comfort Dogs Fit In?



- Decision Tree:



- Report to the Hospital Labor Pool and sign in – you will be sent to the Family Support Center (FSC)
- At the FSC check in with the Mental Health Unit Leader (they will have on a vest with that title on it)
- Comfort Dog teams can take a break in the designated areas of each hospital (cafeteria, lounge, etc.)

**When You Arrive...**

- Always willing to help, but...upon arrival to the hospital/Family Support Center, if stopped before reaching the Disaster Labor Pool, you must explain that you need to report in before the Comfort Dogs can be of service to individuals/victims.

**Customer Service, but...**





Longmont United Hospital:

Mental Health Unit Leader: 303-500-4162

Boulder Community Hospital:

303-938-3432

Avista Hospital:

303 673-1000

Good Samaritan Medical Center:

303-689-4002

**REPORT TO HOSPITAL DISASTER  
LABOR POOL!**

**Contact #'s**



## At the Hospital:

- Social Workers
- Chaplains
- Registration Personnel
- Security

## Off-Site FSC:

- Church or facility personnel
- Medical Reserve Corp.

**Family Support Center Colleagues**